

EC-USB Link

Communication Interface



Installation Instructions

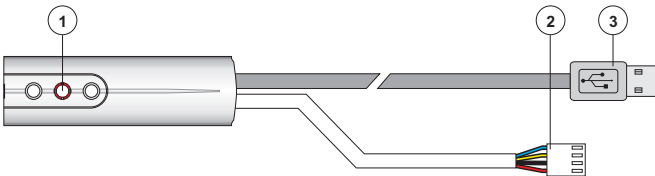
1. Introduction

The *EC-USB Link* can be connected to various *Eclipse* products to provide USB connectivity via a host PC and appropriate programming software. The *EC-USB Link* is compatible with the following Windows® operating systems:

- Windows 98 Second Edition (SE)
- Windows 2000
- Windows Millennium Edition (Me)
- Windows XP
- Windows Vista
- Windows 7

2. Connections

The figure below shows the connection for the *EC-USB Link*:



- ① Data indication: When sending data it lights red and when receiving it lights green.
- ② A 4-way Molex connector that is plugged onto the com port on supported Eclipse products.
- ③ A standard USB type "A" connector that is plugged into the computer's USB socket.

3. USB Driver Installation

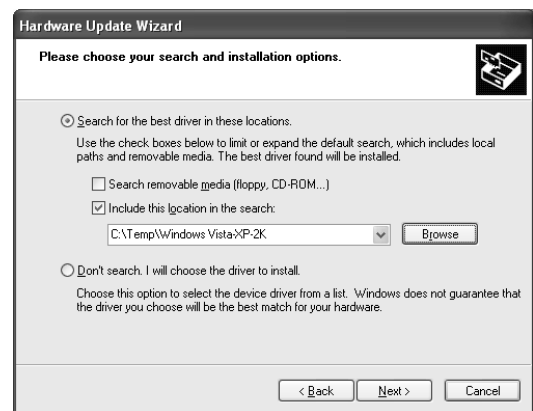
If the computer's operating system is Windows Vista or Windows 7, the driver installation is not required, simply plug the *EC-USB Link* into the computer.

For other versions of Windows operating system the *EC-USB Link* requires a driver to be installed before it can be used. The driver can be downloaded from www.ftdichip.com/Drivers/VCP.htm.

1. Download the relevant driver and extract the files to a temporary folder, e.g., "C:\Temp"
2. Plug the *EC-USB Link* into a USB port on the computer and allow the Operating System to detect the *EC-USB-Link*.
3. When detected the **Add New Hardware Wizard** screen appears:



4. Click the **Install from a list or specific location (Advanced)** option and click the **Next** button.
5. Click the **Include this location in the search** check box. Then, click the **Browse** button to locate the driver files in **C:\Temp\Windows Vista-XP-2K**. Ensure that the **Search removable Media (Floppy, CD-ROM...)** check box is not selected:



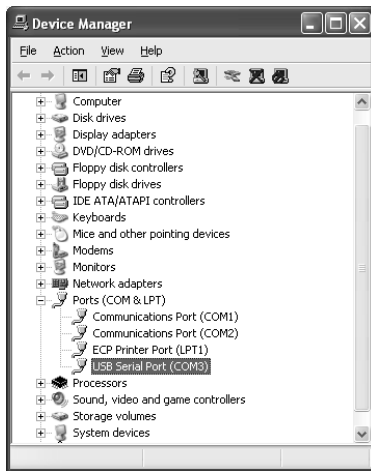
6. Click the **Next** button, the following screen appears:



7. Click the **Finish** button.
8. After a delay the **Found New Hardware Wizard** screen will appear again:



9. Repeat steps 4 to 7 to install the USB Serial Port driver.
10. The *EC-USB Link* will be assigned a virtual com port. To find out which port number has been assigned to the *EC-USB Link*, open the **Device Manager** (press the **+Break** on your keyboard) and expand the **Ports (COM & LPT)** option. You should see the **USB Serial Port** and its com port number, COM3 in the example below:



11. The *EC-USB Link* is now installed and ready for use with the appropriate software package.

4. Specifications

Electrical

Voltage: USB powered 5Vdc.
Current: 15mA

Environmental

Operating Temp.: -25 °C to +55 °C (-13 °F to +131 °F).
Storage Temp.: -25 °C to +60 °C (-13 °F to +140 °F).
Max. Humidity: 95% non-condensing.
EMC: Residential, commercial and light industrial.



Do not throw away the product with the normal household waste at the end of its life, but hand it in at an official collection point for recycling.

Physical

Dimensions: 89.0mm x 26.5mm x 22.7mm.
Housing: 3mm Polycarbonate.
Packed Weight: 120g.

5. Standards

Safety

Conforms to European Union (EU) Low Voltage Directive (LVD) 2006/95/EC.

EMC

Conforms to European Union (EU) Electro-Magnetic Compatibility (EMC) Directive 2004/108/EC.

Security

Conforms to EN 50131-1 and EN 50131-3 Grade 3, Environmental Class IV.



The CE mark indicates that the *EC-USB Link* complies with the European requirements for safety, health, environment and customer protection.

6. Warranty

Zeta Alarm Systems by GLT Exports Ltd products are carefully designed to provide reliable problem-free operation. Product quality is carefully controlled during all manufacturing processes. The *EC-USB Link* is covered against defects in material or faulty workmanship for a period of 2 years from the date of purchase. Due to our policy of continuous product improvement, Zeta Alarm Systems by GLT Exports Ltd reserves the right to change specification without prior notice.

As the *EC-USB Link* is not a complete intruder alarm systems, but only part of it, Zeta Alarm Systems by GLT Exports Ltd does not accept responsibility or liability for any damages whatsoever based on any claim that the unit failed to function correctly.



Technical Support

Email: support@zetaalarmssystems.com